

smiths



Accessories

Smiths Medical PM, Inc.
Patient Monitoring and Ventilation

OXIMETRY

Attachments

Attachment Tape

A 3049
Microfoam
Adhesive Strip
Use with 3025 and 3026

B 3134
Neonate
Use with 3026 and 3043
Pkg. of 50

3135
Infant
Use with 3025 and 3043
Pkg. of 50

3136
Neonate
Use with 3026 and 3043
Pkg. of 100

3137
Infant
Use with 3025 and 3043
Pkg. of 100

C 3138
Posey Wrap
Use with 3025, 3026
and 3043

Reusable Sensors

A 3043
Universal "Y" Sensor

B 3044
Finger Sensor

C 3078
Ear Sensor

D 3178
Pediatric Finger Sensor

E 3444
Comfort Clip® Finger
Sensor

F 1310
D.O.T. Sensor

G 3025
Infant Wrap Sensor
(3134)

H 3026
Neonate Wrap Sensor
(3138)

Simulators

A 1606
Oximeter/ECG Simulator

Disposable Sensors

A-1 1300
Adult Finger Sensor

A-2 1301
Pediatric Finger Sensor

A-3 1302
Neonate Finger Sensor

A-4 1303
Infant Finger Sensor

Patient weight classifications

Neonate (under 3 kg)
Infant (3-15 kg)
Pediatric (15-45 kg)
Adult (over 45 kg)

Attachments



A

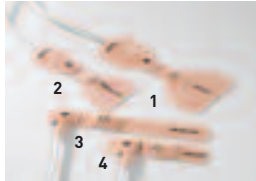


B



C

Disposable Sensors



A

Reusable Sensors



A



B



C



D



E



F



G

Simulators



A

CO₂/RESPIRATORY

Cannulas/ Sample Lines

All cannulas - 7 foot length

A 1101

Adult O₂ Nasal

1102

Pediatric O₂ Nasal

B 1101A

Adult Divided
CO₂/O₂ Nasal

1102P

Pediatric Divided
CO₂/O₂ Nasal

C 1121

Adult Oral/Nasal CO₂/O₂

D 1123

Adult Oral/Nasal CO₂

1124

Pediatric Oral/Nasal CO₂

E 1129

Adult Nasal CO₂

1130

Pediatric Nasal CO₂

1131

Infant Nasal CO₂

F 8211

4 ft. CO₂ Sample Line

8044

8 ft. CO₂ Sample Line

1140

15 ft. CO₂ Sample Line

G 1101 BA

Adult CO₂/ Flow

1102 BP

Pediatric CO₂/ Flow

Airway Adapters

A-1 1100

Straight without filter

1105

Straight with filter

A-2 1151

Pediatric without filter

1152

Pediatric with filter

A-3 8030

Elbow

Kits

A 8214

Patient Attachment Kit
(Capnocheck®,
Capnocheck® II)

B 8217

Calibration Kit with
5093 Cal Gas
(Capnocheck® II,
Capnocheck® Plus/Sleep)

Gas Accessories

A 5093

ETCO₂ Calibration Gas
(Capnocheck® II,
Capnocheck® Plus/Sleep,
Advisor®)

5093J

ETCO₂ Calibration Gas
(105 psi)

B 8061

Calibration Gas Flow
Regulator with Gauge
(Capnocheck® II,
Capnocheck® Plus/
Sleep, Advisor®)

C 8223

Calibration Adapter
(Capnocheck® Plus/Sleep,
Advisor®)

FiO₂

A-1 9189

Adapter "T"

A-2 9190

Sensor

A-3 9191

Cable

Filters

A 1178

Moisture Trap
(Capnocheck® Plus/Sleep
Advisor)

B 1179

CO₂ Absorber
(Capnocheck® Plus/Sleep,
Advisor®)

C 1187

Moisture Trap Adapter
(Capnocheck® Plus/Sleep,
Advisor®)

D 8075

Moisture Trap with
Female Connector
(Advisor®)

E 8208

Gas Manifold
(Capnocheck® II)

F 9048

Eternal 3.5 Micron Filter
(Capnocheck® Plus/Sleep
Advisor)

Cannulas/Sample Lines



A



B



C



D



E



F



G

Airway Adapters



A

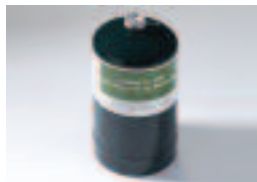


A



B

Gas Accessories



A



B



C

FiO₂



A

Filters



A



B



C



D



E



F

MOUNTING

Mounting Brackets

- A 3354**
Pole Mount Bracket
(3303, 3402)
- B 3356**
Clarity® Series IV
Pole Bracket
(3304, 3404, 6004, 9004)
- C 3393**
Advisor® Wall Mount
- D 3394**
Clarity® Series Wall
Mount Bracket
(3304, 3404, 6004, 9004)
- E 8409**
Pole Mount Bracket
(3303, 3402, 8400, 8401)

Carrying Cases

- A 3315**
Carrying Case with Belt
Clip/Shoulder Strap
(3301)
- B 3322**
Carrying Case with Belt
Clip/Shoulder Strap
(3303)
- C 3369**
Carrying Case with
Shoulder Strap
(Autocorr®, Autocorr® Plus,
Mini-Torr Plus® w/o temp)
- D 3415**
Carrying Case with
Belt Clip
(FingerPrint® &
FingerPrint® Sleep)
- E 3427**
Carrying Case
(Digit®)
- F 8414**
Carrying Case
(Capnocheck® II)

Boots

- A 3318**
Protective Rubber Boot
with Carrying Strap
(3301)
- B 3353**
Protective Rubber
Boot with Carrying
Strap
& Tilt Stand
(3303)
- C 3418**
Protective Rubber Boot
with Carrying Strap
(FingerPrint® & FingerPrint®
Sleep)
- D 3419**
Protective Rubber Boot
with Carrying Strap
(MiniCorr)
- E 8412**
Protective Rubber Boot
(Capnocheck® II)

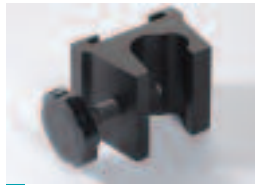
Lanyard

- A 3426**
Digit® Lanyard

Roll Stands

- A 3387**
GCX Style Advisor® Roll
Stand with mounting
bracket, handle & basket
- B 3388**
GCX Style Clarity®
Series Roll Stand with
mounting bracket,
basket, handle & power
supply clamp
- C 3391**
MedVed Style Advisor®
Roll Stand with mount-
ing bracket and basket
(not CE marked)
- D 3392**
MedVed Style Clarity®
Series Roll Stand with
mounting bracket,
basket & power
supply clamp
(not CE marked)
- E 7108**
Clarity® Series/9200
Roll Stand with
mounting bracket
& basket
(international sales only)

Mounting Brackets



A



B



C



D



E

Carrying Cases



A



B



C



D



E



F

Boots



A



B



C

Lanyard



D



E



A

Roll Stands



A



B



C



D



E

BLOOD PRESSURE

Reusable Cuffs

- A-1 6120N**
Newborn (7.7-10.5 cm)
- A-2 6120I**
Infant (9.8-13.3 cm)
- A-3 6120SC**
Small Child (12.4-16.8 cm)
- A-4 6120C**
Child (15.8-21.3 cm)
- A-5 6120SA**
Small Adult (20.0-27.0 cm)
- A-6 6120A**
Adult (25.3-34.3 cm)
- A-7 6120LA**
Large Adult (32.1-43.4 cm)

6145
Neonate Variety Pack
(2 each of 6140, 6141, 6142, 6143, 6144)

Supply Lines

- A 6122**
10 foot with Quick Connect
- A 6122S**
5 foot with Quick Connect
- A 6124**
Neonate 5 foot with Quick Connect

Temperature

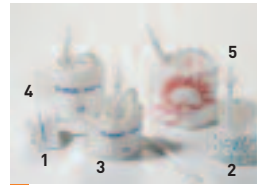
- A 6014**
Electronic Thermometry Temperature Probe Covers
- B 6015L**
Electronic Thermometry Oral Temperature Probe
- 6015R**
Electronic Thermometry Rectal Temperature Probe
- 6016**
Electronic Thermometry Calibration Key

Reusable Cuffs



A

Disposable Cuffs



A

Supply Lines



A

Temperature



A



B

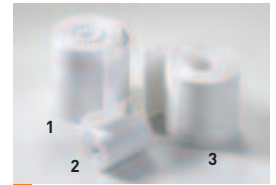
Printers/Paper



A



B



C

Power



A



B



C



D



E



F

MISCELLANEOUS

Printers/Paper

- A 3408**
Graphics Printer (Autocorr® Plus, Mini-Torr Plus®, Capnocheck® Plus)
- B 8411**
Infrared Printer (3180, MiniCorr, Capnocheck® II)
- C-1 6012**
Printer Paper (FingerPrint®, FingerPrint® Sleep, Mini-Torr Plus®)
- C-2 6111**
Printer Paper (Advisor®)
- C-3 8416**
Printer Paper (8411)

Power

- A 8403**
Battery Eliminator (Capnocheck® II) 105-125V, 60Hz

8406
Battery Eliminator (Capnocheck® II) 208-252V, 50/60Hz

8407
Battery Eliminator (Capnocheck® II) 90-220 V 60Hz

B 8404
Battery Charger (Capnocheck® II)

8404A
Battery Charger (Capnocheck® II) 220V

C 8408
Lithium-Ion Rechargeable Battery (Capnocheck® II)

D 1611
Battery Bypass (MiniCorr)/AC Charger (Autocorr®) 105-125V, 60Hz

1612
Battery Bypass (MiniCorr)/AC Charger (Autocorr®) 208-252V, 50/60Hz

1613
Battery Bypass (MiniCorr)/AC Charger (Autocorr®) 90-110V, 60Hz

E 1614
AC Charger (Mini-Torr Plus®, Capnocheck® Plus/Sleep) 115V, 60Hz

1615
AC Charger (Mini-Torr Plus®, Capnocheck® Plus/Sleep) 230V, 50/60Hz

1616
AC Charger (Mini-Torr Plus®, Capnocheck® Plus/Sleep) 90V, 50Hz

F 1617
AC Power Supply (Autocorr® Plus, Graphics Printer) 105-125V, 60Hz

1618
AC Power Supply (Autocorr® Plus, Graphics Printer) 208-252V, 50/60Hz w/3005A Power Cord, 2 Prong

1619
AC Power Supply (Autocorr® Plus, Graphics Printer) 90-110V, 60Hz

G 3005
Power Cord (3180, Advisor®)

3005A
Power Cord, 2 Prong - Europe (3180, Advisor®)

H 3410A
DC Power Cable (Autocorr® Plus, Graphics Printer)

I 8210
AC Charger (3303) 105-125V, 60Hz

8212
AC Charger (3303) 208-252V, 50/60Hz

8216
AC Charger (3303) 90-110V, 50Hz



G



H



I

CABLES

ECG Shielded Safety Type

- A-1 3106**
3-Lead Cable
- A-2 3107**
Wires, 3-Lead
- B-1 3406**
5-Lead Cable
- B-2 3407**
Wires, 5-Lead

Printer Interface

- A 3350**
Printer Interface Cable
(3180, 3301, 3303,
FingerPrint®, MiniCorr)
- B 3361**
Printer Interface Cable
(Autocorr®)
- C 3365**
Printer Interface Cable
(Capnocheck® Plus/Sleep)
- D 3371**
Graphics Printer
Interface
(Autocorr® Plus)

Oximetry

- A 3311**
5 ft
- 3311L**
15 ft

PC Interface

- A 3339**
PC Adapter Cable
(3180, 3301, 3303,
FingerPrint®, MiniCorr)
- B 3362**
PC Interface
(3304/3404) Graphics Printer
Interface (6004)
- C 3366**
PC Interface/Graphics
Printer Interface
(Capnocheck® Plus/Sleep)
- D 3389**
Interface Cable
(Oximetry Software-1621)

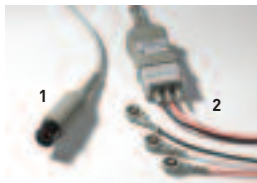
Analog

- A 3351**
Output Adapter
(Autocorr® Plus)
- B 3414**
Output Cable
(Autocorr® Plus)
- C 9014**
3 Channel Analog
Output Cable
(polysomnography)
(Capnocheck® Plus/Sleep)
- D 9015**
4 Channel/Distance
Analog Output Cable
(polysomnography)
(Capnocheck® Plus/Sleep)

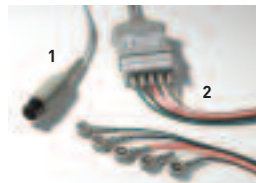
Nurse Call

- A 3352NO**
Digital Output Adapter
(open circuit) (Autocorr®,
Autocorr® Plus)
- B 3352NC**
Digital Output Adapter
(closed circuit) (Autocorr®,
Autocorr® Plus)

ECG Shielded Safety Type



A



B

Printer Interface



A



B



C

Oximetry



D



A

PC Interface



A



B



C



D

Analog



A



B



C



D

Nurse Call



A



B

VENTILATOR ACCESSORIES

Brackets

A 372001
Mounting Bracket
(paraPAC, ventiPAC)

B 372002
Mounting Clamp
(paraPAC, ventiPAC,
babyPAC™)

D 122003
Disposable Patient
Circuit Kit
(paraPAC, ventiPAC)

E 122002C
Disposable Patient
Circuit Kit with Exhaust
Collector, CO₂ Clip &
PEEP Valve
(paraPAC, ventiPAC)

F 122003C
Disposable Patient
Circuit Kit with CO₂ Clip
(paraPAC, ventiPAC)

Roll Stands

A 3397
MedVed Roll Stand with
mounting plate, basket
& "D" tank bracket
(paraPAC, ventiPAC)

Roll Stands



A

Carrying Case

A 342001
Carrying Case
(paraPAC, ventiPAC)

B 342003
Shoulder Strap
(paraPAC, ventiPAC,
babyPAC™)

Carrying Case



A



B

Hoses

A 123000
Air Hose
(babyPAC™)

B 123001
5 ft. Gas Input Hose
(paraPAC, ventiPAC,
babyPAC™)

123001L
10 ft. Gas Input Hose
(paraPAC, ventiPAC,
babyPAC™)

Valves

A 124001
Reusable Patient Valve
(paraPAC, ventiPAC)

B 124002
Disposable Patient Valve
(paraPAC, ventiPAC)

C 124003
Disposable Patient
Valve with PEEP
(paraPAC, ventiPAC)

D 124006
Disposable PEEP Valve
(paraPAC, ventiPAC)

E 122005
Diaphragm for
Disposable Circuit –
Green (babyPAC™)

Hoses



A



B

Regulators

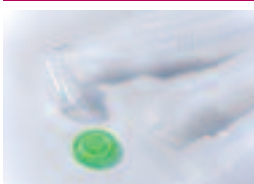


A

Regulators

A 331002
Regulator, Z-VF-D with
Auxiliary Flowmeter
(paraPAC, ventiPAC,
babyPAC™)

Patient Circuit Kits



A



B



C



D



E



F

Exhaust Collectors

A 124102
Disposable Exhaust
Collector –
PEEP Adapter
(paraPAC, ventiPAC)

Valves



A



B



C

Patient Circuit Kits

A 122004
babyPAC Disposable
Patient Circuit Kit
(babyPAC™)

B 122001
Reusable Patient
Circuit Kit
(paraPAC, ventiPAC)

C 122002
Disposable Patient
Circuit Kit with Exhaust
Collector & PEEP Valve
(paraPAC, ventiPAC)

Manometer

A 125003
Disposable Manometer
for Disposable
Circuit 122002 & 122003
(paraPAC, ventiPAC)



D



E

Exhaust Collectors



A



A

Manometer

Products subject to change without notice. Please read the instructions for use supplied with the product for detailed instructions, warnings and cautions.

For further information, please call Smiths Medical PM, Inc. at 262-542-3100 or 800-558-2345, or your Smiths Medical distributor.

smiths

Smiths Medical PM, Inc.

Patient Monitoring and Ventilation

N7 W22025 Johnson Drive, Waukesha, Wisconsin 53186 USA

Phone: 262-542-3100 Fax: 262-542-0718 Toll-Free: 800-558-2345

www.smiths-medical.com

BCI, Advisor, AutoCorr, Capnocheck, Clarity, MiniCorr, Mini-Torr Plus, Digit, FingerPrint babyPAC, paraPAC, ventiPAC, and Smiths design mark are trademarks of the Smiths Medical family of companies.
The symbol® indicates the trademark is registered in the U.S. Patent and Trademark Office and certain other countries.

All other names and marks mentioned are the trade names, trademarks or service marks of their respective owners.

©2005 Smiths Medical family of companies. All rights reserved. Acces Bro Rev01 09/05